



StepStone Real Estate 2026 research outlook

Europe

February 2026

NOTES

This document is for informational purposes and is meant only to provide a broad overview for discussion purposes. This document does not constitute an offer to sell, a solicitation to buy, or a recommendation for any security, or as an offer to provide advisory or other services by StepStone Group LP, StepStone Group Real Assets LP, StepStone Group Real Estate LP, StepStone Group Private Wealth LLC, StepStone Group Private Debt AG, StepStone Group Europe Alternative Investments Limited and StepStone Group Private Debt LLC, their subsidiaries or affiliates (collectively, "StepStone") in any jurisdiction in which such offer, solicitation, purchase or sale would be unlawful under the securities laws of such jurisdiction. The presentation is being made based on the understanding that each recipient has sufficient knowledge and experience to evaluate the merits and risks of investing in private market products. Information contained in this document should not be construed as financial or investment advice on any subject matter. StepStone expressly disclaims all liability in respect to actions taken based on any or all of the information in this document. This document is confidential and solely for the use of StepStone and the existing and potential investors or clients of StepStone to whom it has been delivered, where permitted. By accepting delivery of this presentation, each recipient undertakes not to reproduce or distribute this presentation in whole or in part, nor to disclose any of its contents (except to its professional advisors), without the prior written consent of StepStone.

Expressions of opinion are intended solely as general market commentary and do not constitute investment advice or a guarantee of returns. All expressions of opinion are as of the date of this document, are subject to change without notice and may differ from views held by other businesses of StepStone.

Some information used in the presentation has been obtained from third parties through various published and unpublished sources considered to be reliable. StepStone does not guarantee its accuracy or completeness and accepts no liability for any direct or consequential losses arising from its use. Thus, all such information is subject to independent verification by prospective investors.

All information provided herein is subject to change.

All valuations are based on current values calculated in accordance with StepStone's Valuation Policies and may include both realized and unrealized investments. Due to the inherent uncertainty of valuation, the stated value may differ materially from the value that would have been used had a ready market existed for the portfolio investments or a different methodology had been used. The long-term value of these investments may be lesser or greater than the valuations provided.

StepStone Group LP, its affiliates and employees are not in the business of providing tax, legal or accounting advice. Any tax-related statements contained in these materials are provided for illustration purposes only and cannot be relied upon for the purpose of avoiding tax penalties. Any taxpayer should seek advice based on the taxpayer's particular circumstances from an independent tax advisor.

PAST PERFORMANCE IS NOT INDICATIVE OF FUTURE RESULTS. ACTUAL PERFORMANCE MAY VARY.

Prospective investors should inform themselves and take appropriate advice as to any applicable legal requirements and any applicable taxation and exchange control regulations in the countries of their citizenship, residence or domicile which might be relevant to the subscription, purchase, holding, exchange, redemption or disposal of any investments. Each prospective investor is urged to discuss any prospective investment with its legal, tax and regulatory advisors in order to make an independent determination of the suitability and consequences of such an investment.

An investment involves a number of risks and there are conflicts of interest. Please refer to the risks and conflicts disclosed herein or in relevant disclosure documents associated with potential investments.

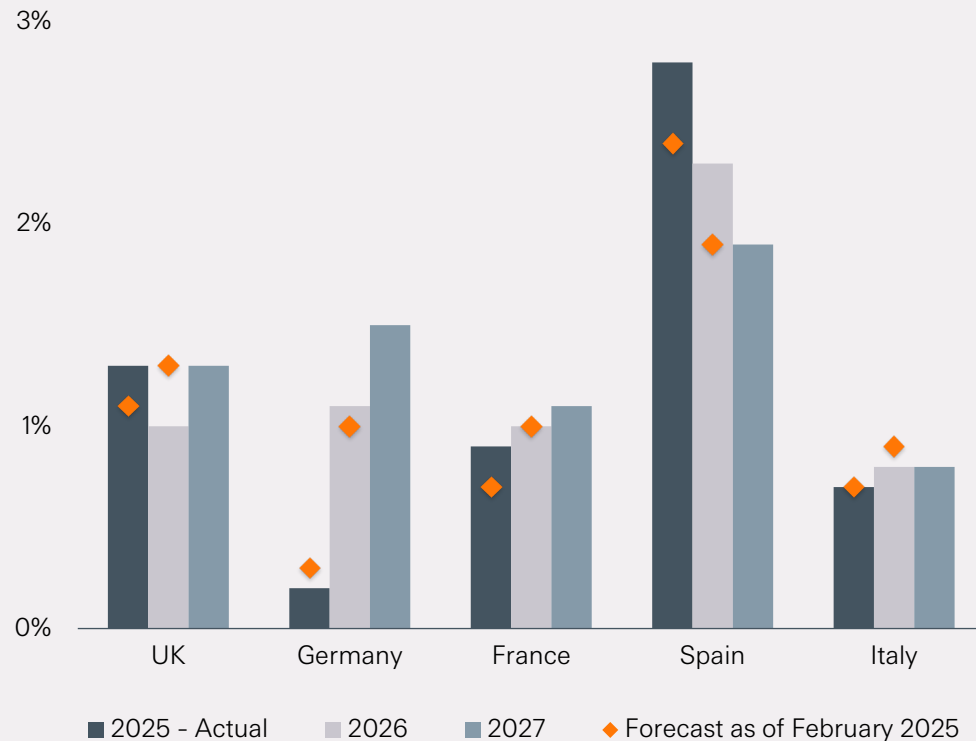
Each of StepStone Group LP, StepStone Group Real Assets LP, StepStone Group Real Estate LP, StepStone Group Private Wealth LLC and StepStone Group Private Debt LLC is an investment adviser registered with the Securities and Exchange Commission ("SEC"). StepStone Group Europe LLP is authorized and regulated by the Financial Conduct Authority, firm reference number 551580. StepStone Group Europe Alternative Investments Limited ("SGEAIL") is an investment adviser registered with the SEC and an Alternative Investment Fund Manager authorized by the Central Bank of Ireland and StepStone Group Private Debt AG ("SPD") is an SEC Exempt Reporting Adviser and is licensed in Switzerland as an Asset Manager for Collective Investment Schemes by the Swiss Financial Markets Authority FINMA. Such registrations do not imply a certain level of skill or training and no inference to the contrary should be made.

In relation to Switzerland only, this document may qualify as "advertising" in terms of Art. 68 of the Swiss Financial Services Act (FinSA). To the extent that financial instruments mentioned herein are offered to investors by SPD, the prospectus/offering document and key information document (if applicable) of such financial instrument(s) can be obtained free of charge from SPD or from the GP or investment manager of the relevant collective investment scheme(s). Further information about SPD is available in the SPD Information Booklet which is available from SPD free of charge.

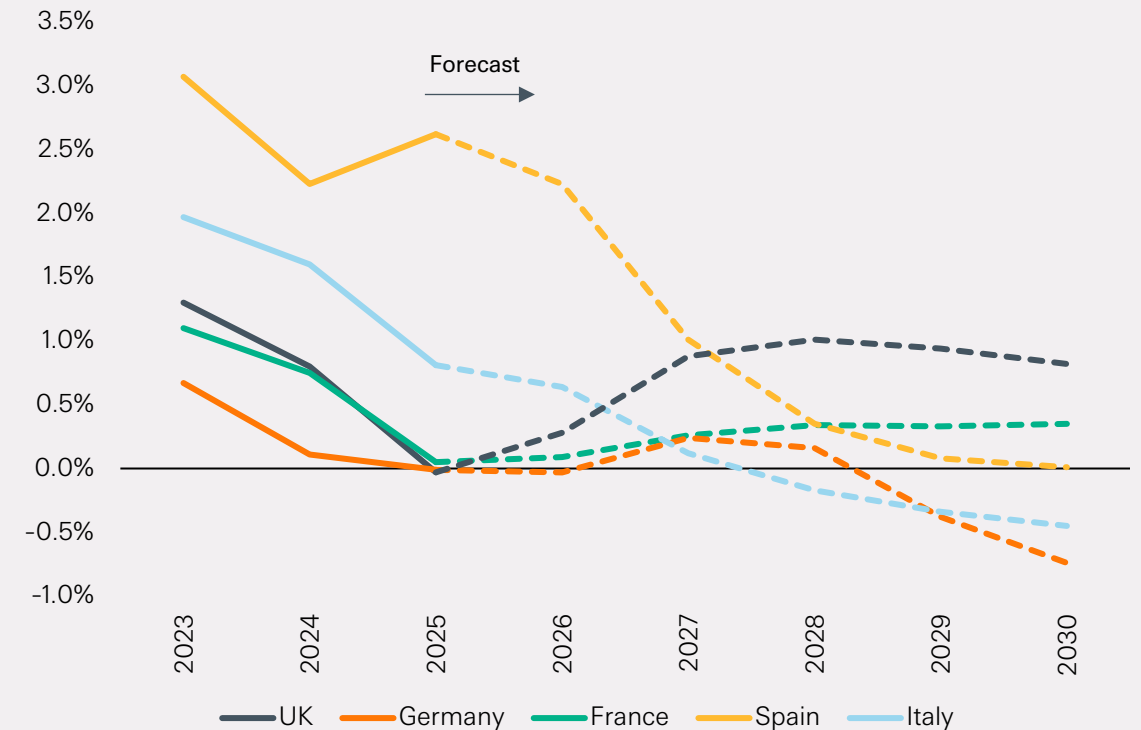
All data is as of February 2026, unless otherwise noted.

Slow, positive growth expected to continue in Europe

GDP growth forecast

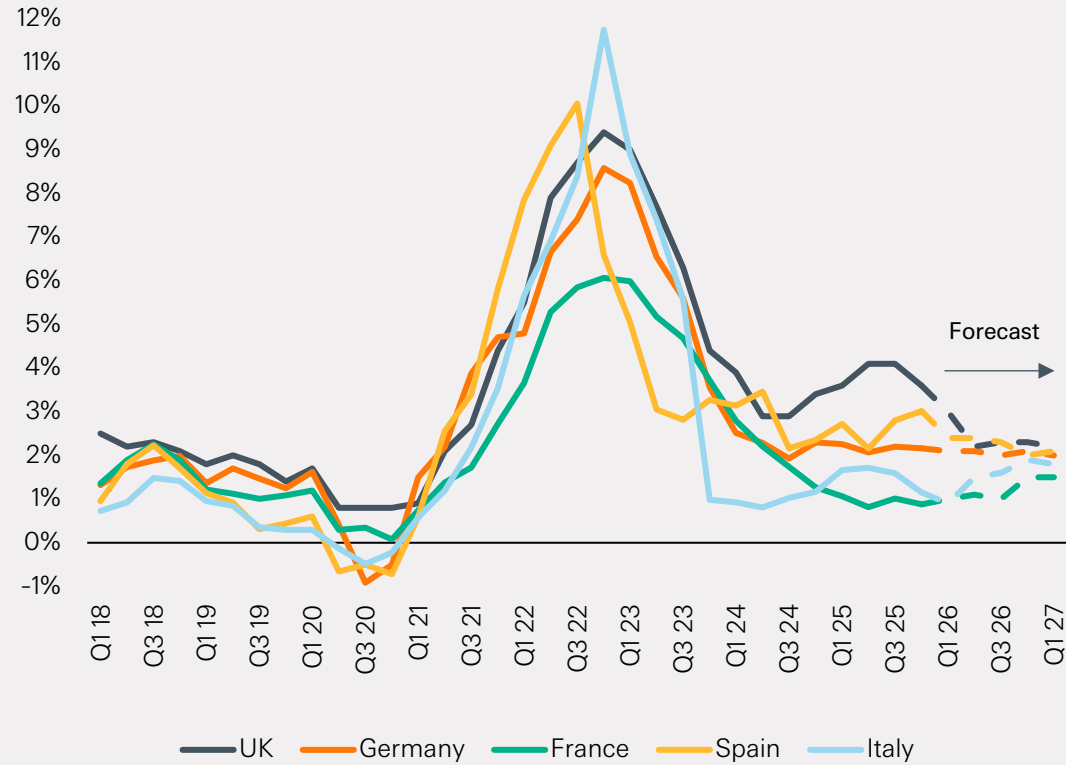


Employment growth

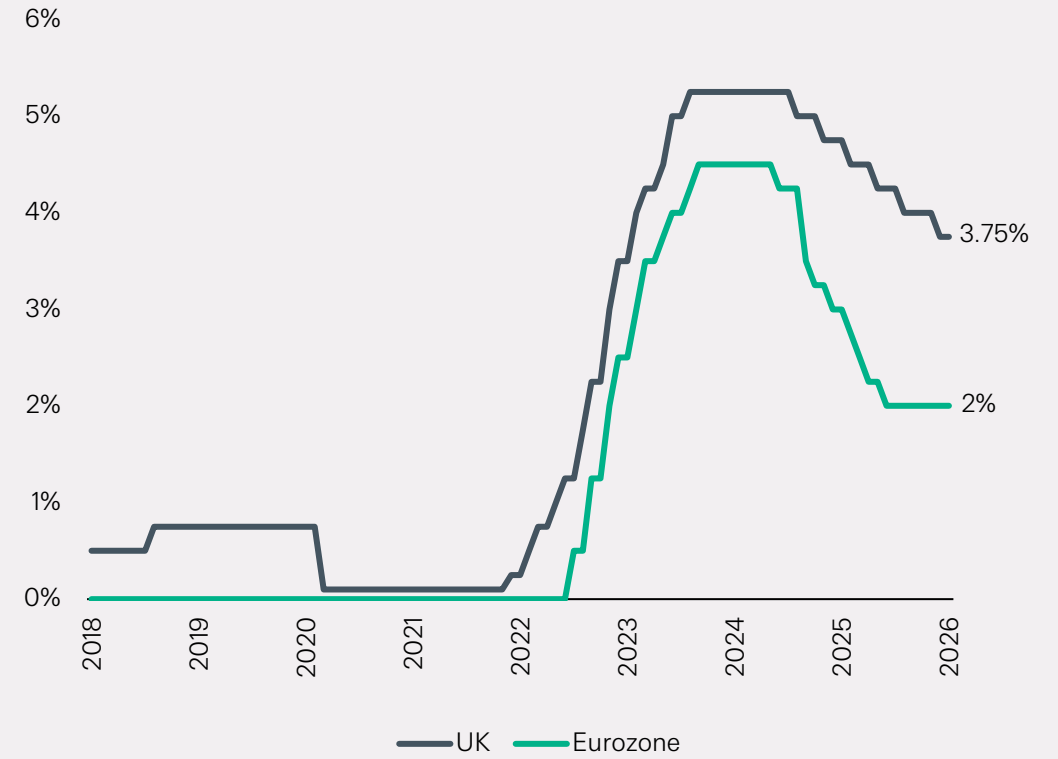


Inflation and policy rates are down, less so in UK

Annual CPI inflation



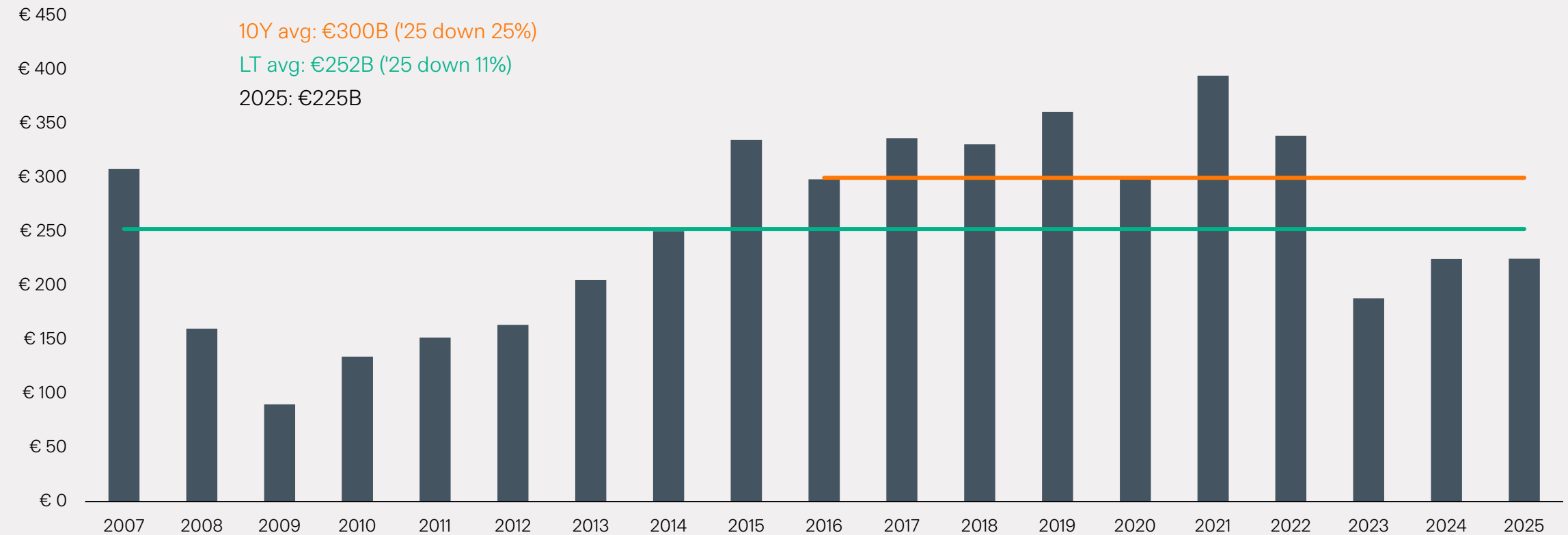
Central bank policy rates



Transaction activity showed little progress in 2025

Europe and UK annual transaction volume

€ in billions



Source: MSCI Real Capital Analytics, as of February 2026.

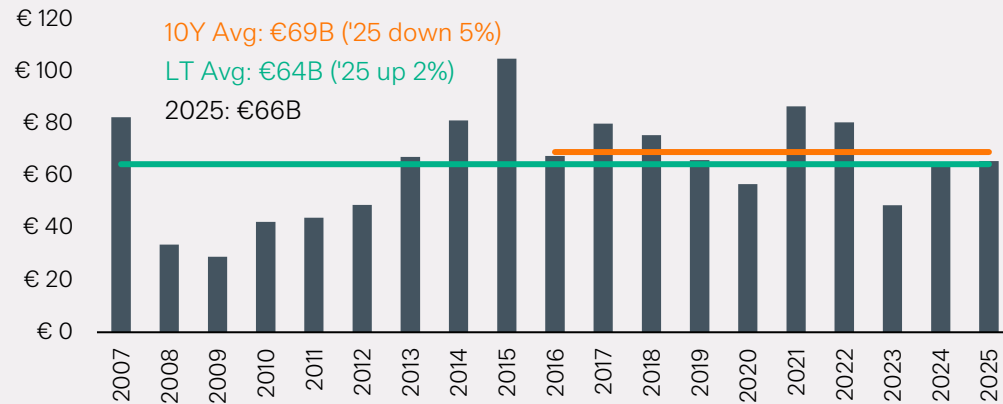
STEPSTONE GROUP

5

Germany's slow recovery is weighing on regional totals

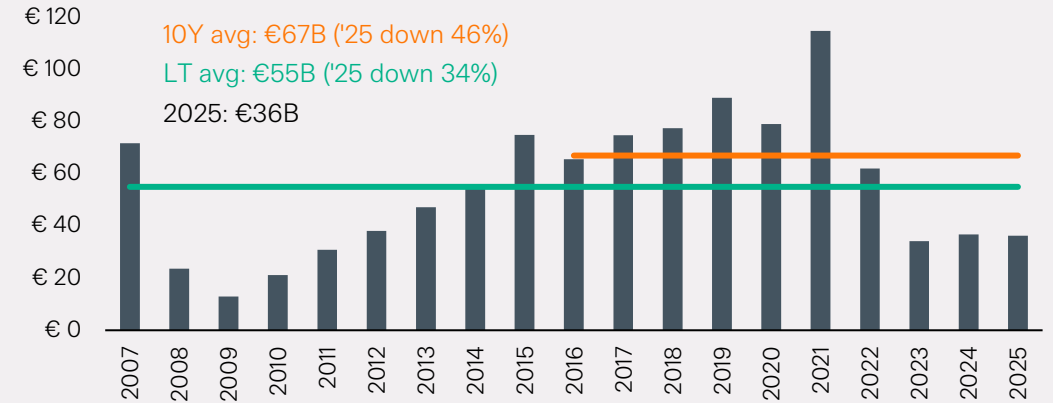
UK annual transaction volume

€ in billions



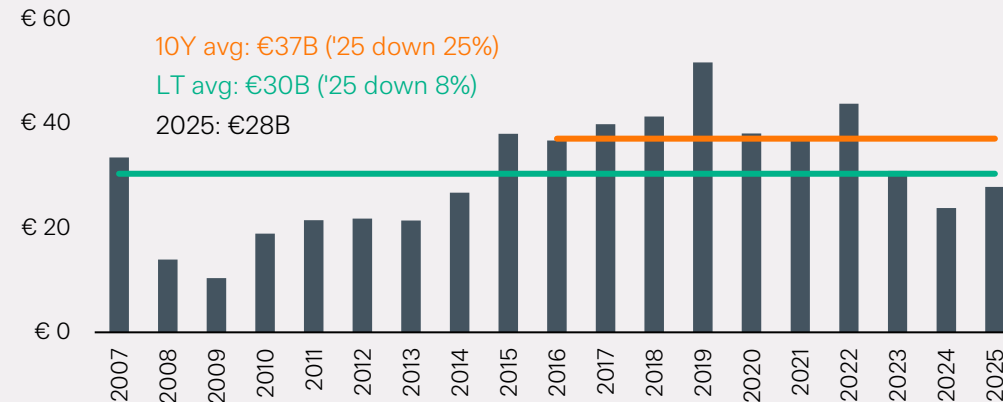
Germany annual transaction volume

€ in billions



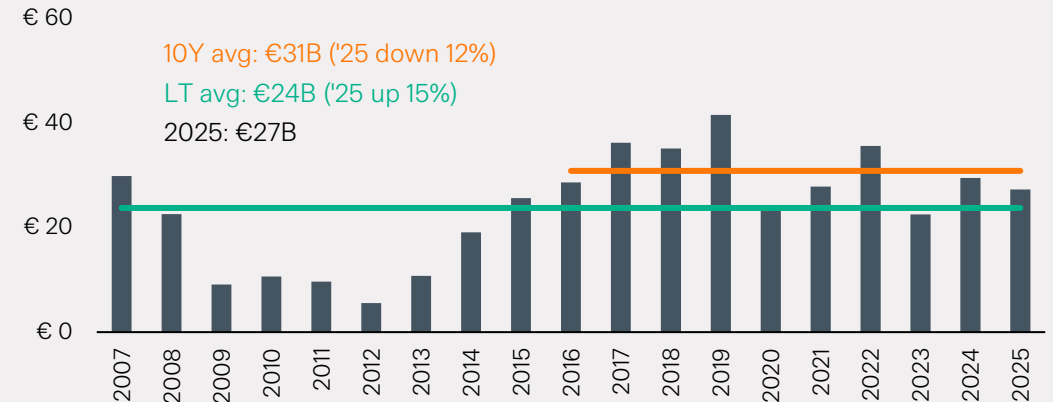
France annual transaction volume

€ in billions



Southern Europe annual transaction volume

€ in billions



Source: MSCI Real Capital Analytics, as of February 2026.

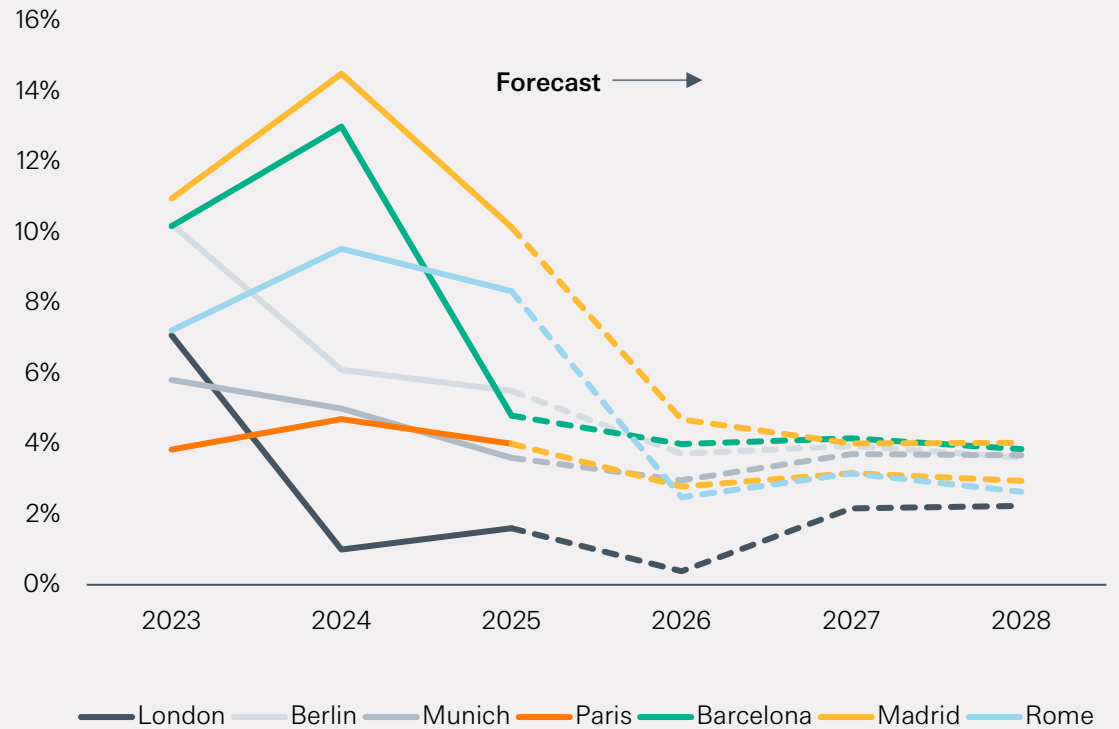
Property fundamentals

Residential fundamentals

Vacancy

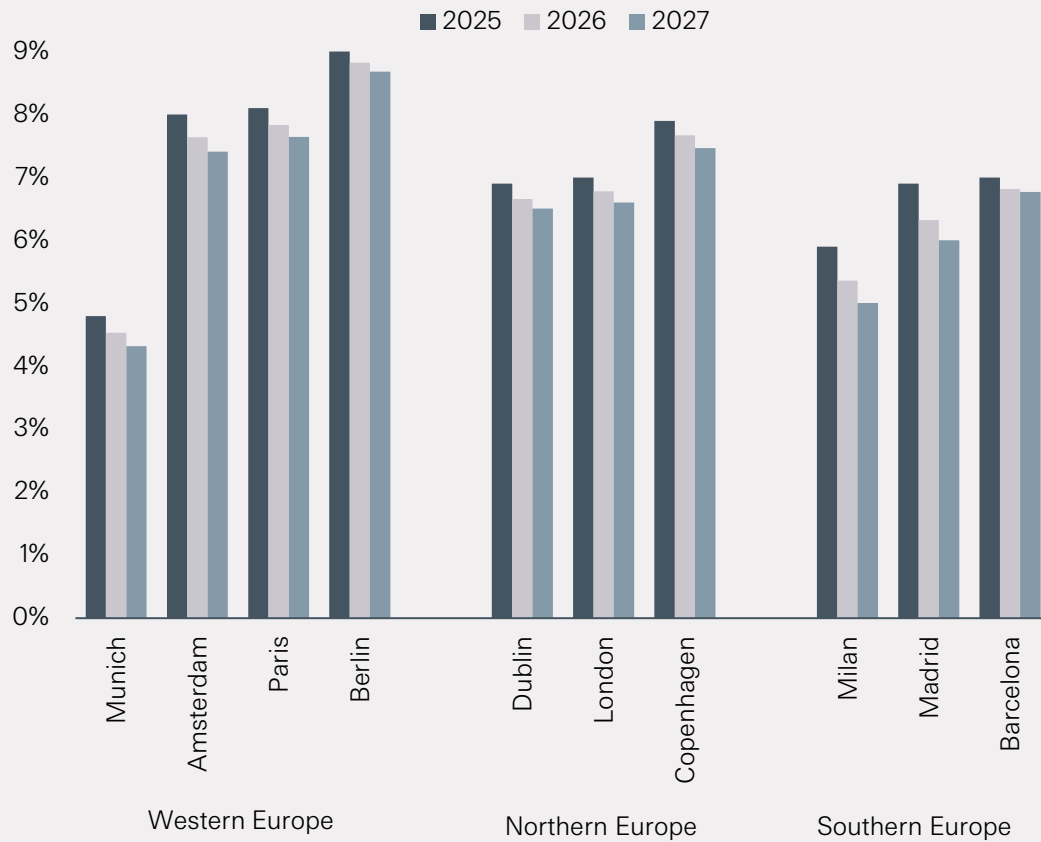


Headline rent growth

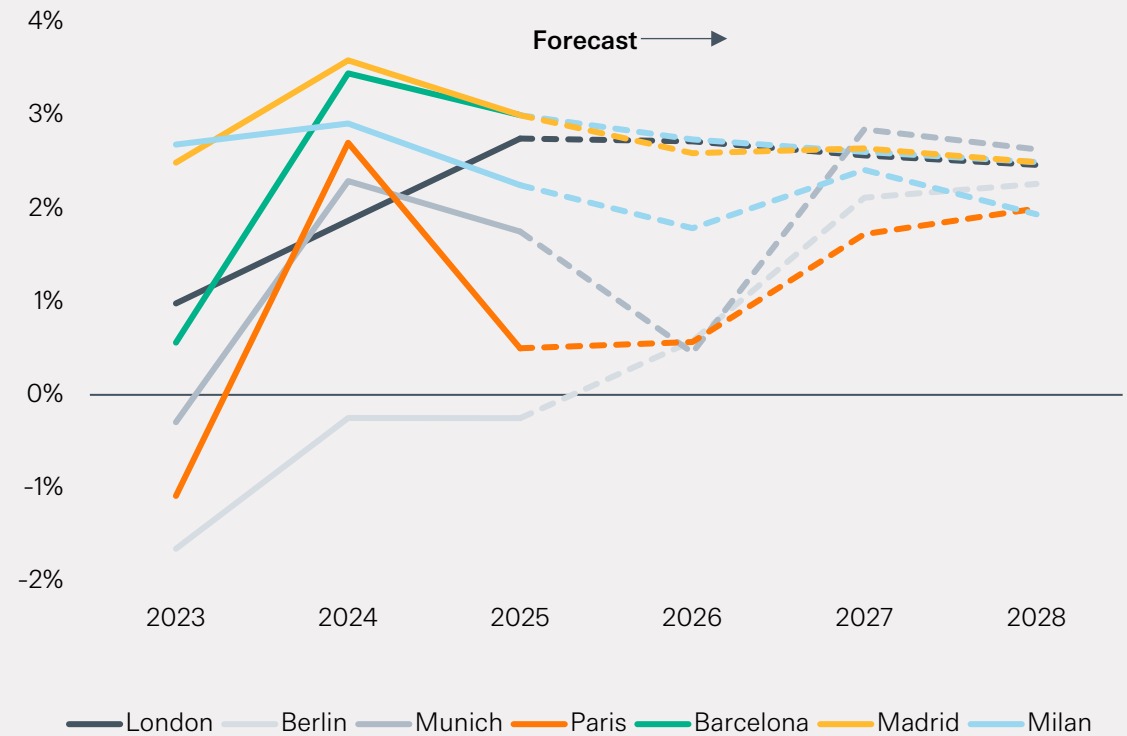


Retail Fundamentals

Vacancy

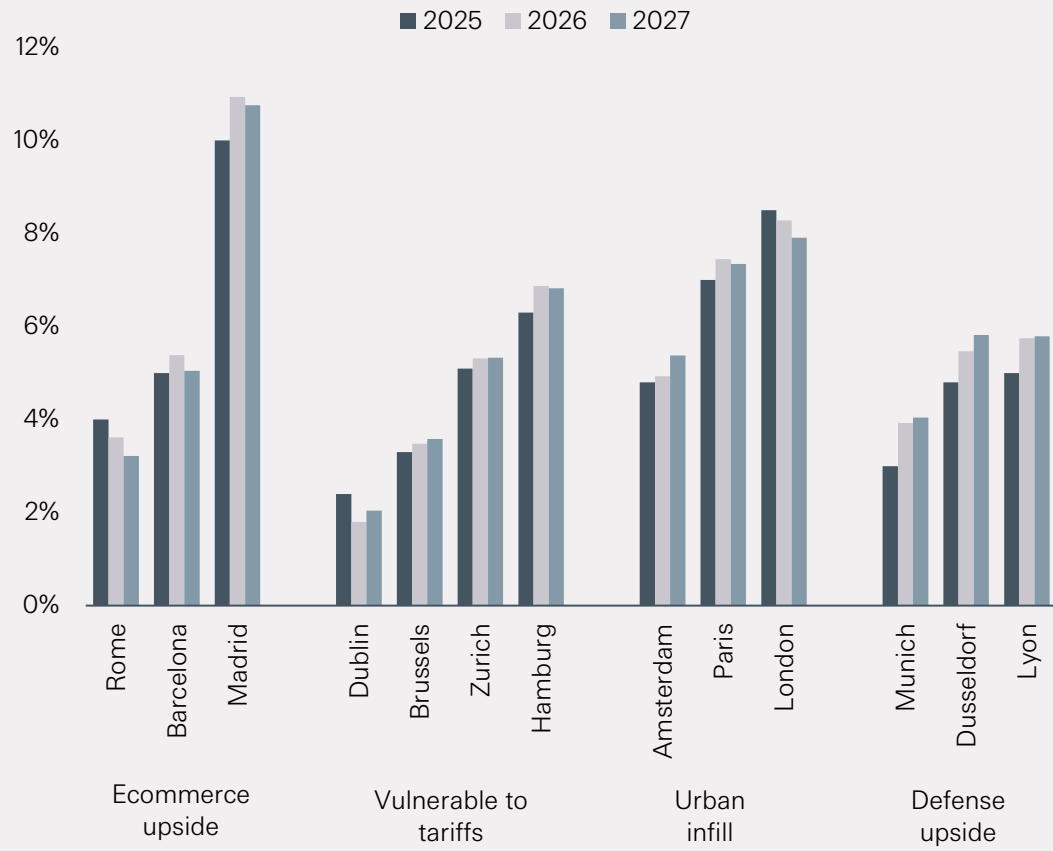


Headline rent growth

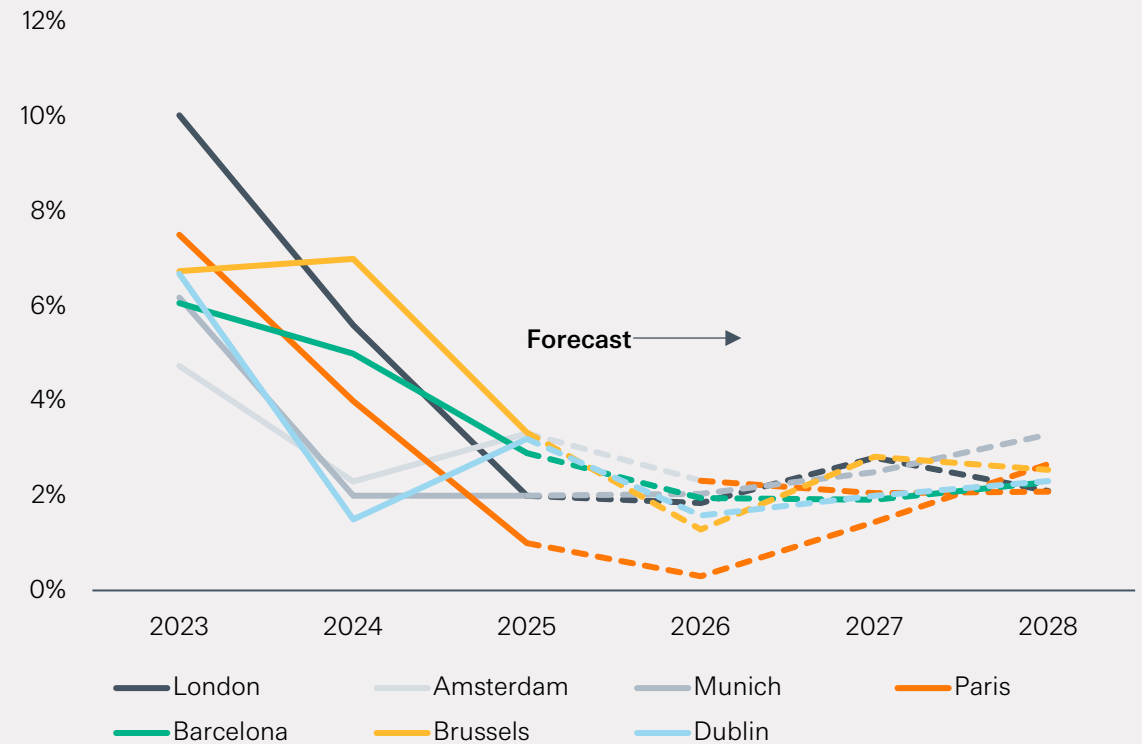


Industrial fundamentals

Vacancy



Headline rent growth

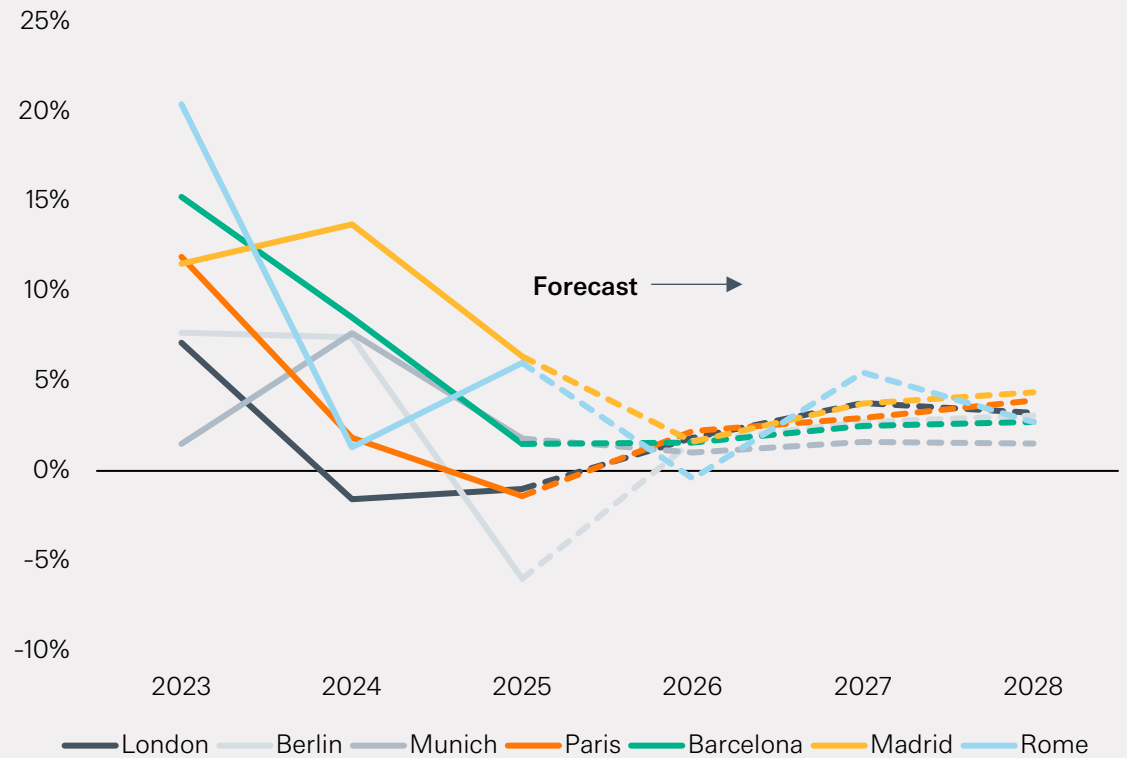


Hotel fundamentals

Vacancy



Headline rent growth

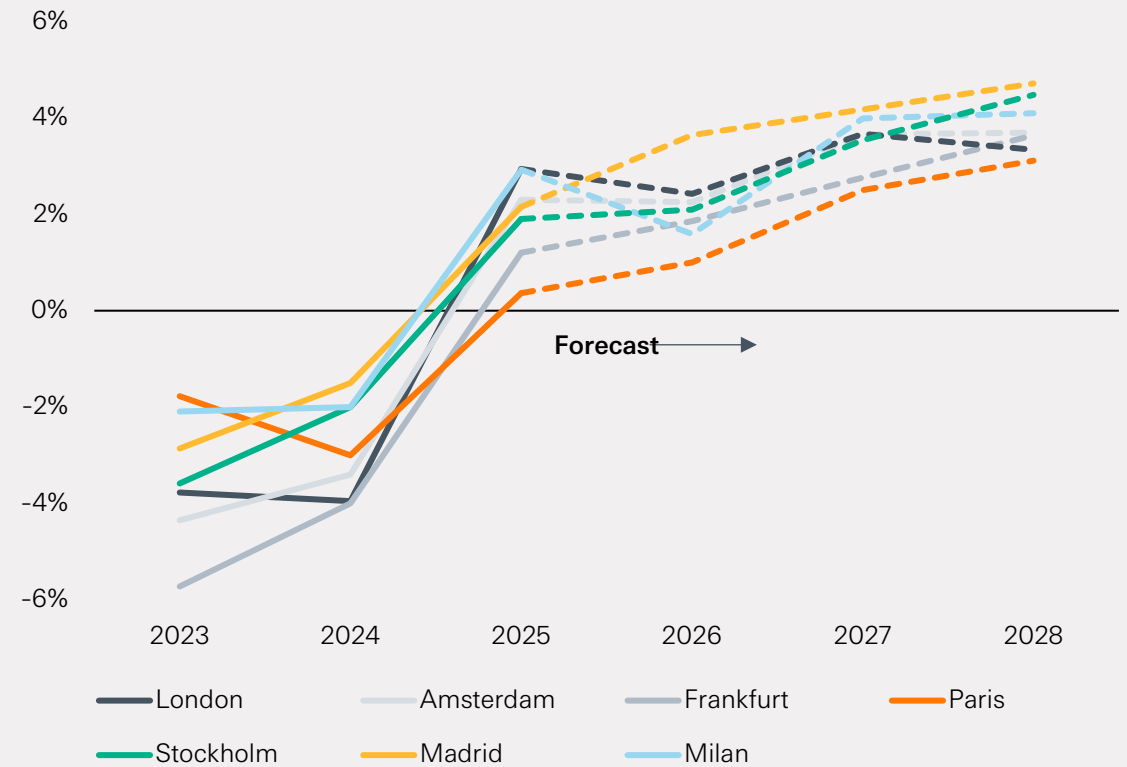


Office fundamentals

Vacancy



Headline rent growth



RISKS AND OTHER CONSIDERATIONS

Risks Associated with Investments. Identifying attractive investment opportunities and the right underlying fund managers is difficult and involves a high degree of uncertainty. There is no assurance that the investments will be profitable and there is a substantial risk that losses and expenses will exceed income and gains.

Restrictions on Transfer and Withdrawal; Illiquidity of Interests; Interests Not Registered. The investment is highly illiquid and subject to transfer restrictions and should only be acquired by an investor able to commit its funds for a significant period of time and to bear the risk inherent in such investment, with no certainty of return. Interests in the investment have not been and will not be registered under the laws of any jurisdiction. Investment has not been recommended by any securities commission or regulatory authority. Furthermore, the aforementioned authorities have not confirmed the accuracy or determined the adequacy of this document.

Limited Diversification of Investments. The investment opportunity does not have fixed guidelines for diversification and may make a limited number of investments.

Reliance on Third Parties. StepStone will require, and rely upon, the services of a variety of third parties, including but not limited to attorneys, accountants, brokers, custodians, consultants and other agents and failure by any of these third parties to perform their duties could have a material adverse effect on the investment.

Reliance on Managers. The investment will be highly dependent on the capabilities of the managers.

Risk Associated with Portfolio Companies. The environment in which the investors directly or indirectly invests will sometimes involve a high degree of business and financial risk. StepStone generally will not seek control over the management of the portfolio companies in which investments are made, and the success of each investment generally will depend on the ability and success of the management of the portfolio company.

Uncertainty Due to Public Health Crisis. A public health crisis, such as the recent outbreak of the COVID-19 global pandemic, can have unpredictable and adverse impacts on global, national and local economies, which can, in turn, negatively impact StepStone and its investment performance. Disruptions to commercial activity (such as the imposition of quarantines or travel restrictions) or, more generally, a failure to contain or effectively manage a public health crisis, have the ability to adversely impact the businesses of StepStone's investments. In addition, such disruptions can negatively impact the ability of StepStone's personnel to effectively identify, monitor, operate and dispose of investments. Finally, the outbreak of COVID-19 has contributed to, and could continue to contribute to, extreme volatility in financial markets. Such volatility could adversely affect StepStone's ability to raise funds, find financing or identify potential purchasers of its investments, all of which could have material and adverse impact on StepStone's performance. The impact of a public health crisis such as COVID-19 (or any future pandemic, epidemic or outbreak of a contagious disease) is difficult to predict and presents material uncertainty and risk with respect to StepStone's performance.

Taxation. An investment involves numerous tax risks. Please consult with your independent tax advisor.

Conflicts of Interest. Conflicts of interest may arise between StepStone and investors. Certain potential conflicts of interest are described below; however, they are by no means exhaustive. There can be no assurance that any particular conflict of interest will be resolved in favor of an investor.

Allocation of Investment Opportunities. StepStone currently makes investments, and in the future will make investments, for separate accounts having overlapping investment objectives. In making investments for separate

accounts, these accounts may be in competition for investment opportunities.

Existing Relationships. StepStone and its principals have long-term relationships with many private equity managers. StepStone clients may seek to invest in the pooled investment vehicles and/or the portfolio companies managed by those managers.

Carried Interest. In those instances where StepStone and/or the underlying portfolio fund managers receive carried interest over and above their basic management fees, receipt of carried interest could create an incentive for StepStone and the portfolio fund managers to make investments that are riskier or more speculative than would otherwise be the case. StepStone does not receive any carried interest with respect to advice provided to, or investments made on behalf, of its advisory clients.

Other Activities. Employees of StepStone are not required to devote all of their time to the investment and may spend a substantial portion of their time on matters other than the investment.

Material, Non-Public Information. From time to time, StepStone may come into possession of material, non-public information that would limit their ability to buy and sell investments.

Responsible Investment Integration. While StepStone seeks to integrate certain Responsible Investment ("RI") factors into its investment process and firm operations, there is no guarantee that StepStone's RI strategy will be successfully implemented or that any investments or operations will have a positive RI impact. Applying RI factors to investment decisions involves qualitative and subjective decisions and there is no guarantee the criteria used by StepStone to formulate decisions regarding RI, or StepStone's judgment regarding the same, will be reflected in the beliefs or values of any particular client or investor. There are significant differences in interpretation of what constitutes positive RI impact and those interpretations are rapidly changing. The description of RI integration herein is provided to illustrate StepStone's intended approach to investing and firm operations; however, there is no guarantee that the processes will be followed in every circumstance or at all.

Performance Information. No investment decisions may be made in reliance on this document. In considering performance information herein, readers should bear in mind that past performance is not indicative of future results and that actual results may vary. There can be no assurance that any StepStone fund will be able to successfully implement its investment strategy or avoid losses. Performance shown herein may include investments across different StepStone funds. The aggregate returns are not indicative of the returns an individual investor would receive from these investments. No individual investor received such aggregate returns as the investments were made across multiple funds and accounts over multiple years.



stepstonegroup.com